

Евг. Шилин

# Школа игры на блокфлейте



Часть 1  
Для начинающих  
Сопрано

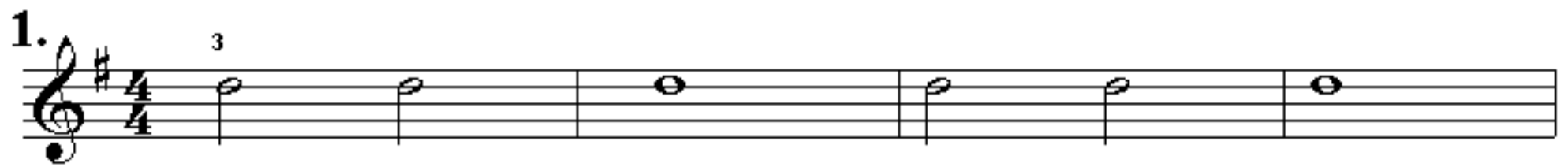
2008



# БЛОКФЛЕЙТА СОТРАНО

## Начальные упражнения.

1.



2.



3.



4.



5.



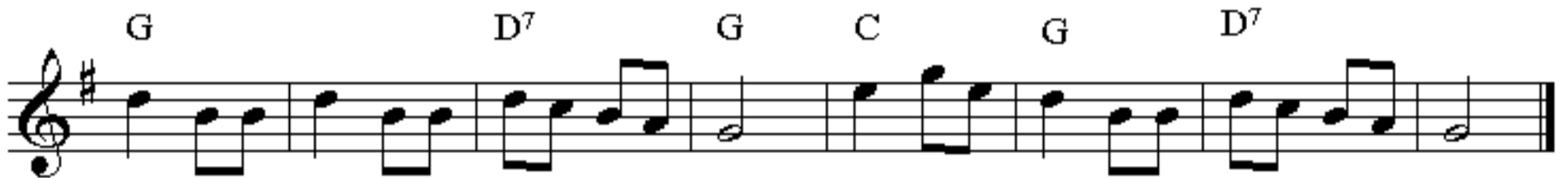


# Гамма Соль-мажор



## Лёгкие пьесы.

### 1. ЁЛОЧКА



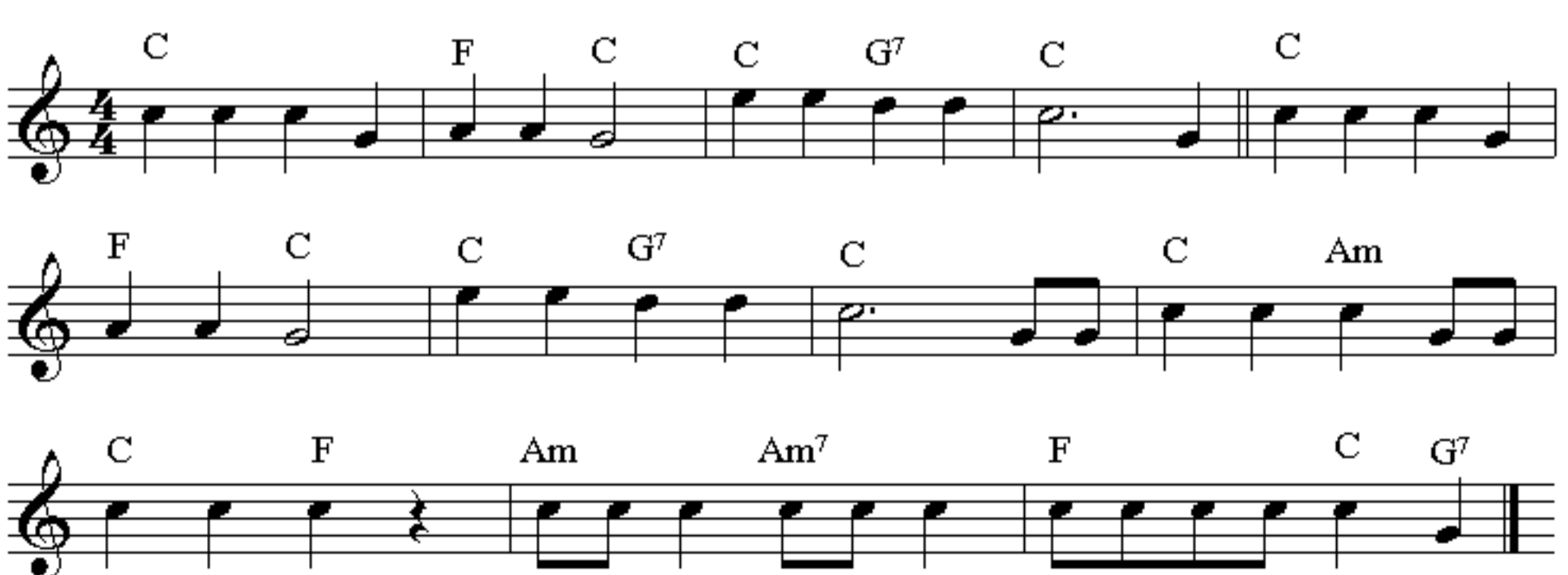
### 2. МАЛЕНЬКАЯ ТПОЛЬКА



### 3. INSY, WINSY, SPIDER



### 4. OLD MACDONALD HAD



## 5. HAPPY BIRTHDAY TO YOU

Musical notation for "Happy Birthday to You" in 3/4 time. The melody is written on a single staff. The key signature is C major. The notes are: C4 (quarter), D4 (quarter), E4 (quarter), F4 (quarter), G4 (quarter), A4 (quarter), B4 (quarter), C5 (quarter), B4 (quarter), A4 (quarter), G4 (quarter), F4 (quarter), E4 (quarter), D4 (quarter), C4 (quarter). Chords are indicated above the staff: C (above C4), G7 (above G4), and C (above C5).

## 6. DOWN IN DEMERARA

Musical notation for "Down in Demerara" in 4/4 time. The melody is written on a single staff. The key signature is C major. The notes are: C4 (quarter), D4 (quarter), E4 (quarter), F4 (quarter), G4 (quarter), A4 (quarter), B4 (quarter), C5 (quarter), B4 (quarter), A4 (quarter), G4 (quarter), F4 (quarter), E4 (quarter), D4 (quarter), C4 (quarter). Chords are indicated above the staff: C (above C4), C7 (above C5), F (above F4), C (above C5), G7 (above G4), and C (above C5).

## 7. CHILDREN'S SONG

Musical notation for "Children's Song" in 2/4 time. The key signature is A major (two sharps). The notes are: A4 (quarter), B4 (quarter), C5 (quarter), D5 (quarter), C5 (quarter), B4 (quarter), A4 (quarter), G4 (quarter), F4 (quarter), E4 (quarter), D4 (quarter), C4 (quarter). Chords are indicated above the staff: A (above A4), D (above D5), A (above A4), D (above D5), A (above A4), E7 (above E4), and A (above A4).

## 8. CLEMENTINE

Musical notation for "Clementine" in 3/4 time. The key signature is C major. The notes are: C4 (quarter), D4 (quarter), E4 (quarter), F4 (quarter), G4 (quarter), A4 (quarter), B4 (quarter), C5 (quarter), B4 (quarter), A4 (quarter), G4 (quarter), F4 (quarter), E4 (quarter), D4 (quarter), C4 (quarter). Chords are indicated above the staff: C (above C4), G7 (above G4), C (above C5), G (above G4), G7 (above G4), and C (above C5).

## 9. СВЕТИТ МЕСЯЦ

5

Musical score for "СВЕТИТ МЕСЯЦ" in G major, 4/4 time. The score consists of four staves of music. The first staff begins with a C chord, followed by G, C, and G. The second staff begins with a D chord, followed by G, D, and G. The third staff begins with a C chord, followed by G, C, and G7. The fourth staff begins with a D chord, followed by G, D, D7, and G. The piece concludes with a double bar line.

## 10. ПЕРЕТЁЛОЧКА

Musical score for "ПЕРЕТЁЛОЧКА" in G minor, 2/4 time. The score consists of two staves of music. The first staff begins with a Dm chord, followed by Gm, A7, and Dm. The second staff begins with a Gm chord, followed by Bb7, A7, and Dm. The piece concludes with a double bar line.

## 11. МЫ ИДЁМ ПО УРУГВАЮ

Musical score for "МЫ ИДЁМ ПО УРУГВАЮ" in G major, 4/4 time. The score consists of two staves of music. The first staff begins with an Am chord, followed by E7. The second staff begins with an E7 chord, followed by Am. The piece concludes with a double bar line.

## 12. ВО ПОЛЕ БЕРЁЗА СТОЯЛА

Musical score for "ВО ПОЛЕ БЕРЁЗА СТОЯЛА" in G major, 2/4 time. The score consists of two staves of music. The first staff begins with Am, C, D, F, E7, Am, Am, C, D, F, E7, Am. The second staff begins with E7, D, F, E7, Am, E7, D, F, E7, Am. The piece concludes with a double bar line and a key signature change to two sharps (D major).

## 13. ПО ДОНУ ГУЛЯЕТ

Musical score for "13. ПО ДОНУ ГУЛЯЕТ" in D major, 3/4 time. The score consists of two staves. The first staff contains the melody with chords D, A7, D, G, and D. The second staff contains the accompaniment with chords A7, D, G, D, A7, and D.

## 14. ПОЛЬКА

Musical score for "14. ПОЛЬКА" in A minor, 2/4 time. The score consists of two staves. The first staff contains the melody with chords Am, Dm, E7, and Am. The second staff contains the accompaniment with chords Am, Dm, E7, and Am.

## 15. АВГУСТИН

Musical score for "15. АВГУСТИН" in D major, 3/4 time. The score consists of three staves. The first staff contains the melody with chords G, D, and G. The second staff contains the accompaniment with chords D7, G, D7, G, and D7. The third staff contains the accompaniment with chords G, D7, and G.

## 16. МОЙ КОСТЁР

Musical score for "16. МОЙ КОСТЁР" in A minor, 3/8 time. The score consists of two staves. The first staff contains the melody with chords Am, Dm6, E7, and Am. The second staff contains the accompaniment with chords Am, A7, Dm, Am, E7, and Am.